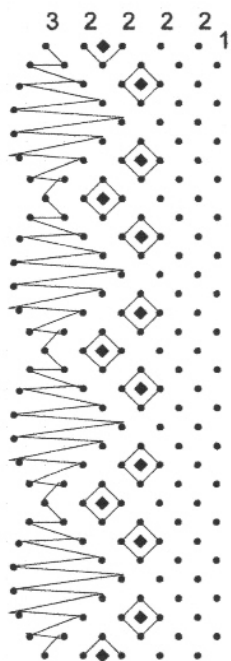


Working Diagram



(c)2012 Daphne Martin



Instructions

Hang 3 pairs on the 1st left pin. 2 pairs on next 5 dots
From the left pin work wholestitch and twist across all pairs and leave the worker at the end. This will work through the footside and then become a passive pair, twist once.
Work the fan as normal, but twist the metallic thread twice before working the headside pin. This gives a pretty edge.
Work lace as long as you need. I used 8 inches gathered around the outside edge of an Indian bangle, about 2 inches wide.

When you have done this, decorate as you like.

Threads

Tanne 30

Metallic thread of colour of your choice

Bobbins

14 pairs I have added another pair to make the footside a little bit thicker

